

Elna Expressive 830

Computer controlled embroidery machine

Maximal embroiding area: 200 x 280 mm

Mono or Multichromatic designs

Touch screen display

Safety



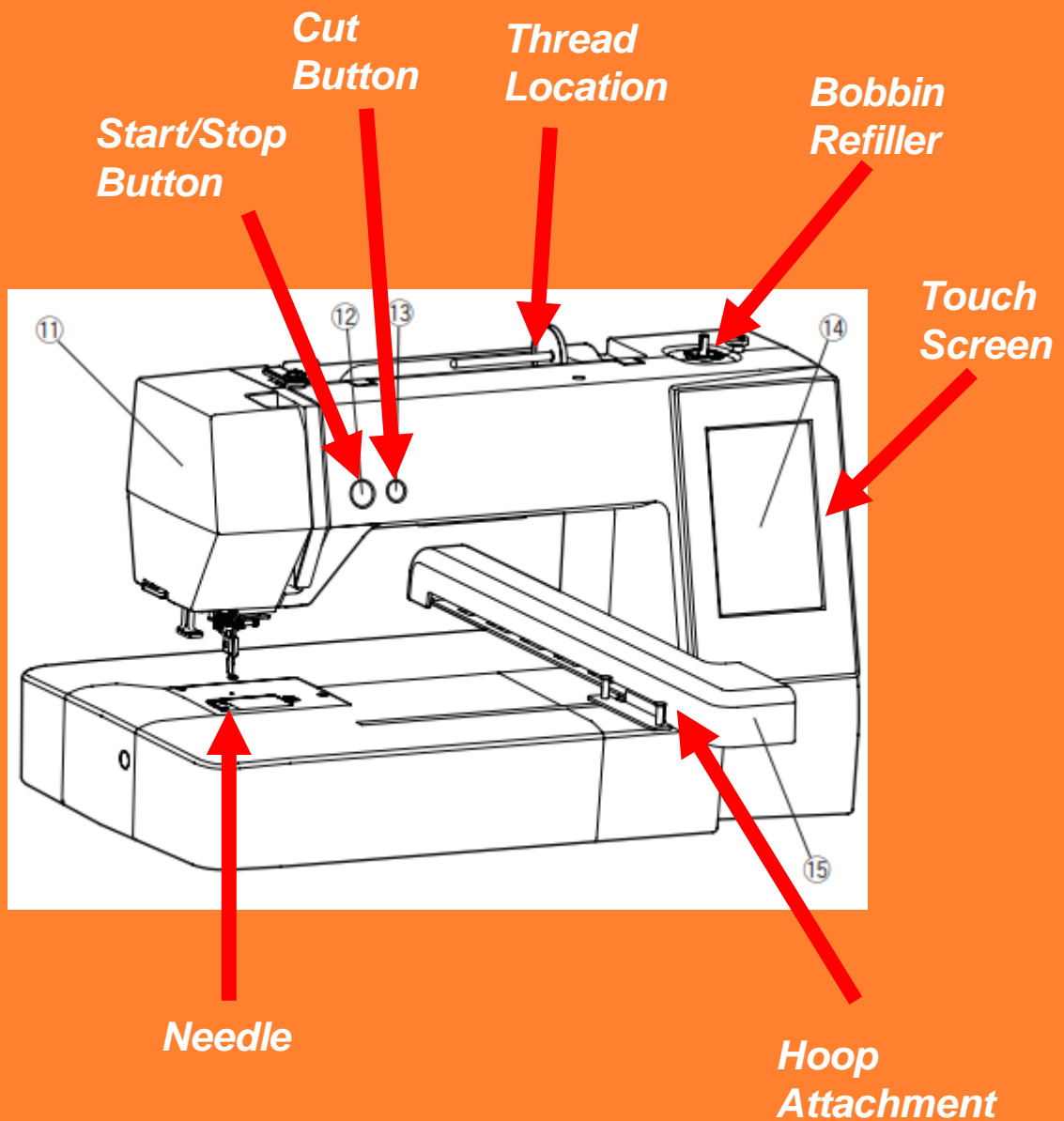
**Keep your hands away while
emboidering!**



MACHINE OVERVIEW

Steps

- 1. Add the vlies to your fabric
- 2. Place your fabric inside a hoop with an appropriate size
- 3. Prepare the design on the software and export it on the machine
- 4. Prepare the machine and change the thread to the desired colour
- 5. Start embroidering



1. Adding the vlies

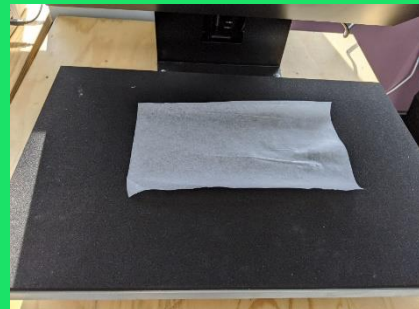
When embroidering you will need to add vlies to the **back** of the fabric. Without it the machine will make a big hole in your fabric. In addition, the vlies provides a unstretchy base, which keeps the design in place despite the movements of the machine.

We provide 2 options:

- The **thicker** one is added to the back of your fabric and held in place by clamping into the hoop.
- The **thinner** one can be **ironed** directly onto the fabric (with the shiny side). This method is recommended especially with stretchy fabric.

Ironing on the vlies:

- Cut the material slightly bigger than the chosen embroidery hoop but smaller than your fabric.
- Turn on the heat press using the switch on the right side.
- Tip: For best results ensure that the fabric is ironed!
- Place the iron-on vlies with its **shiny side up** in the heat press.



- Then place the fabric on top. The upper side will be the nice-looking side of your embroidery.
- Close the heat press, wait for it to beep and open it up again. Done!



2. PLACE YOUR FABRIC INSIDE A HOOP

Step 1

- Choose the smallest hoop possible for your embroidery
- Open up the hoop using the screw on the side and remove the inner part.



Step 3

- Place your fabric in the outer hoop, with the fabric facing up and the vlies facing down.



Step 4

- Then add the inner hoop from the top.
- Fasten it using the screw.



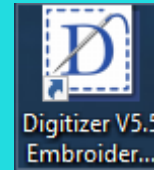
Step 5

- Pull on the fabric sides to tighten it wrinkle free.
- Then use the clips to fold the excess fabric out of the way. Make sure to add clips only on the locations shown on the picture.



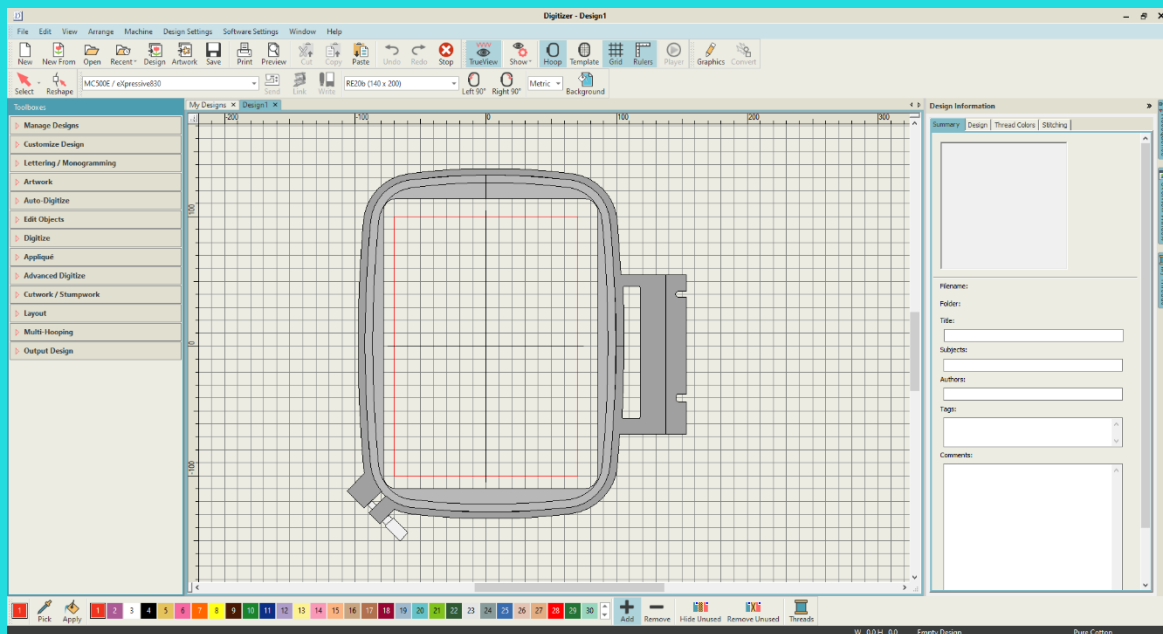
3. PREPARE YOUR DESIGN

Digitizer V5.5

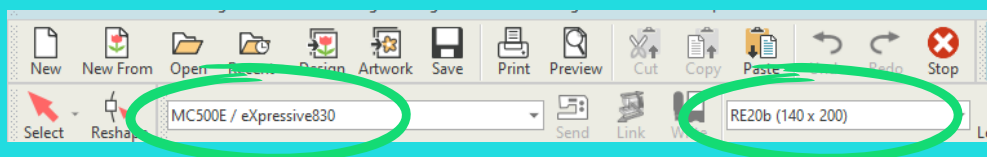


- Open the embroidery software

- This is the base view of the software. As you can see the hoop is displayed.

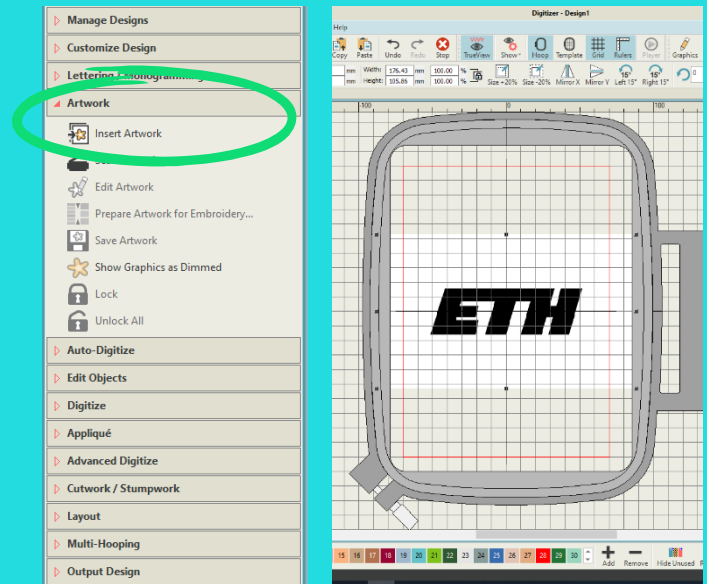


- In the top bar, select the **eXpressive830** machine and the **hoop size** you are using.
- In our example the hoop is the RE20b. The name can be found on the hoop's frame.

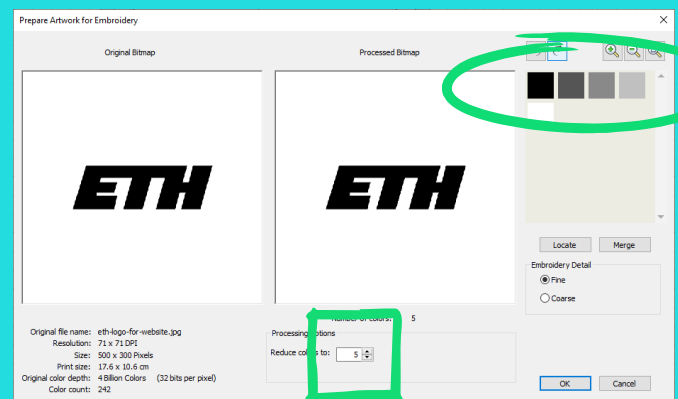


3. PREPARE YOUR DESIGN

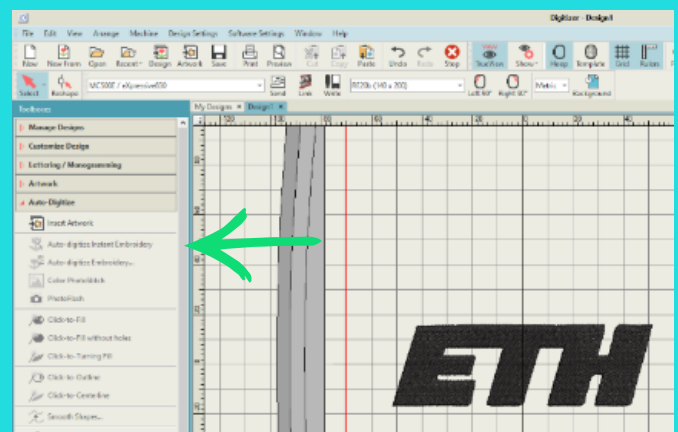
- In the “Artwork” dropdown, click on “**Insert Artwork**” function to load your graphic.
- You can now modify your design using the “**Prepare Artwork for Embroidery**” function.



- On the left you can see the original graphic, on the right the preview. Use the “Reduce colors to” option to make a simple 1 or multiple tone embroidery (one being the background). Press “OK”. You can see the number of colors on the right reducing.



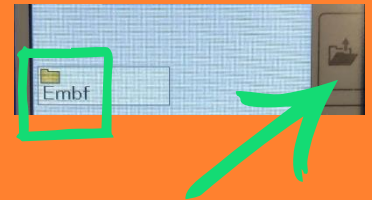
- Use the “**Auto-digitize Instant Embroidery**” functionality to create the pattern for your modified graphic.
- Go on the computer in the upper left corner to “File” and export your design as **.jpx** on the **usb stick** in the **Embf** folder.



4. PREPARE THE MACHINE

- Turn on the machine and follow the instructions on the machine.

- Insert the USB stick of the embroidery machine with your exported file.
- Click the **folder button** on the screen and open the folder **Embf**. Change the page with the arrow buttons below the screen to find your design and select it.





- **Change the top and bottom thread** to the correct colour shown on the screen (see next page)

- **Insert** the hoop using the spring-loaded lever. You may have to **lift the foot** using the lever behind the machine.



- Make sure the hoop is inserted correctly by checking if the metal tops are over the plastic.



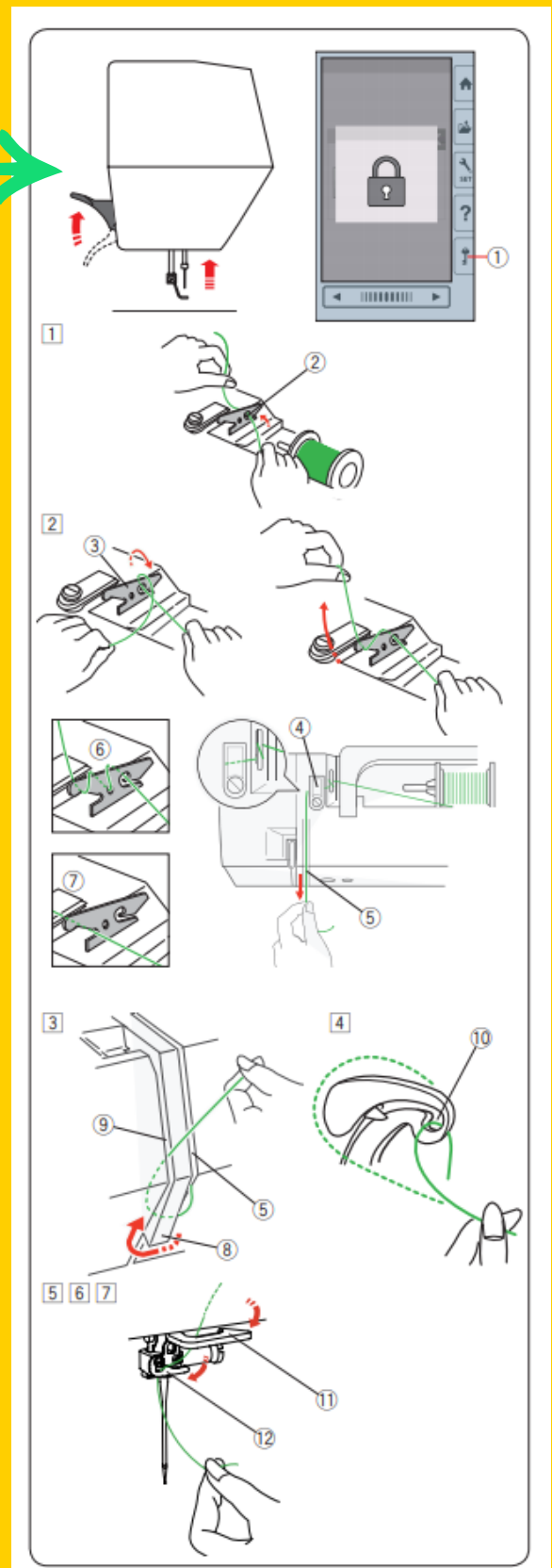
- Click on the  button. Then select the  button on the display to move the needle around your graphic. Make sure your design fits into your hoop.

CHANGE THE TOP THREAD

- Use the special embroidery thread placed in the drawers on the left side of the embroidery machine (the embroidery thread is shinier than the sewing thread)

Steps

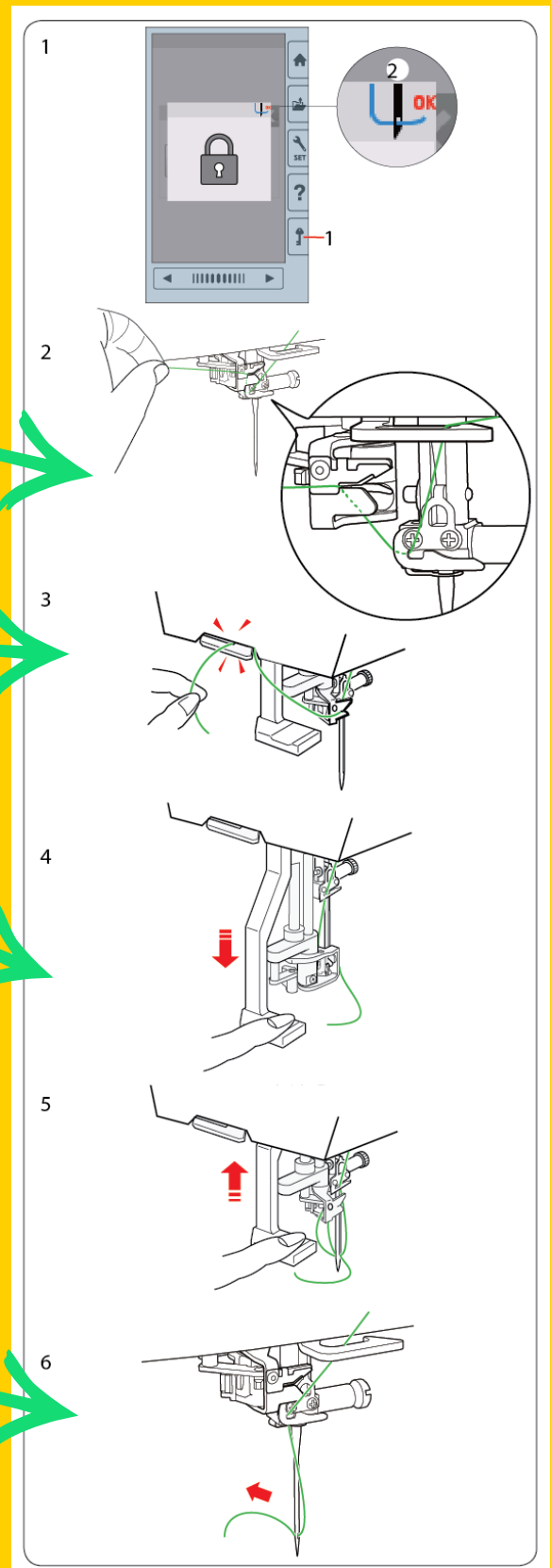
- Lock the machine using the key button and raise the foot.
- Then feed the string according to the drawing on the right and the drawing/numbering on the machine.



THREAD THE NEEDLE

Automatic needle threader

- First lower the foot and turn the big knob on the right of the machine until the thread symbol appears on the display.
- Ensure that the thread is inserted as shown.
- If needed, you can shorten the thread.
- Push down the lever left to the needle all the way, then let go to have the thread being pulled through the hole.
- At last, pull the rest of the thread trough the hole.

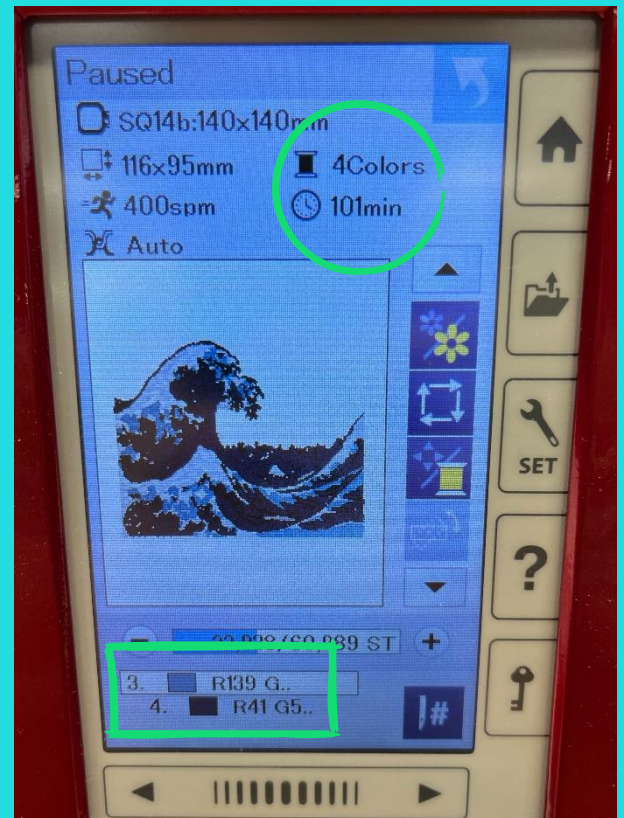


5. START EMBROIDERING

- When the machine is ready, lower the presser foot, **hold the bottom thread** and click on the **start/stop button** on the machine to start embroidering.



- For **multichromatic** design, repeat the steps without removing the fabric from the hoop. The machine will tell you when to change the color. On the screen you see in which **order** the colors must be changed.
- The machine shows the estimated **time** for doing the embroidery



ONCE FINISHED

- Raise the presser foot and remove the embroidery hoop.
- Remove your fabric from the embroidery hoop.
- The vlies can easily be removed from the back of the fabric by tearing or washing it away.
- Place the embroidery hoop, the embroidery thread and all the other tools into the corresponding drawers. Ensure that the thread is in the **correct position**.
- Log out of the machine and computer.



EXTRA: REFILLING THE BOBBIN

- In case there is no bobbin with the correct color you will need to fill one. Take a spool with the thread of your choice and feed it through as shown in (1).
- Place an empty bobbin on the pin on the top right of the machine and make some turns with the thread in the correct direction. Next push the pin next to it to the left.
- The machine will automatically notice that you want to refill a bobbin. For the start make sure the speed is set to a minimum and press the “Start/Stop” button.

- Have close attention on the spinning bobbin!
- The thread should not spool under the bobbin because it is very difficult to remove and damages the machine.

- The machine will also automatically notice when the bobbin is full and stop. Cut the thread.

