



MAKERSPACE GENERAL INTRODUCTION

STUDENT PROJECT HOUSE

MAKERSPACE

- Digital Fabrication
- Electronics
- Textiles
- Wood

DIGITAL MAKERSPACE

- AI
- Apps
- Websites
- AR/VR
- IOT

PROJECT SUPPORT

- Coworking
- Coaching
- Events

LIFE SCIENCE LAB

- Biosafety level 1 lab

WHAT CAN YOU DO HERE?

DIGITAL FABRICATION

- 3D printers (FDM, DLP)
- Laser cutters
- Vacuum former
- 3D scanner (Zentrum only)

ELECTRONICS

- Soldering
- Oscilloscope
- Signal generator
- Reflow oven
- PCB mill (Höngg only)

TEXTILES

- Sewing
- Overlock
- Embroidery
- Heat press
- Cutting plotter

WOODWORKING*

- Miter Saw
- Bandsaw
- Belt sander
- Shaper Origin
- Drill press
- Planer
- *Höngg only

WHAT CAN YOU DO HERE?



ETH STUDENT
PROJECT HOUSE

Workshops!

Some examples:

- Make an Engraved Glass - With the Lasercutter
- Make a Stuff Sack - On the Sewing Machine
- Make a Digital Clock - Learn to Solder
- How to Design a PCB in KiCAD
- How to 3D Model in Autodesk Fusion
- How to Sculpt 3D Objects in Blender

HOW DOES IT WORK?

GENERAL INTRO



→ Required before using any tool.

Gives you access to: space
+ Studio Tables.

Duration: 30 min

WHEN:

Mon - Fri
16.30
& 18.30

MACHINES INTRO

→ Every machine requires an intro before using.

Gives you access to: single machine.

Duration: varies (up to 1h)

WHEN:

Mon - Fri
CALENDAR on
SPH website

WOODWORKING INTRO

→ Required to use the woodworking.

Gives you access to:
woodworking basic machines.

Duration 1.5h.

WHEN:

Mon - Fri
CALENDAR on
SPH website

WHEN CAN I USE THE MACHINES?

GENERAL USE HOURS

WHAT

→ Time when the Makerspace is open for users.

WHEN

Open studio

(Studio tables, textiles, FDM 3D printers, vacuum thermoformer)

Mon - Fri
8 - 20

Digital Fabrication room

(Electronics, laser cutters, DLP printers, 3D scanner, PCB Mill)

Mon - Fri
8 - 19.45

HOW DO I GET INTROS AND HELP?

SUPPORT HOURS

WHAT

- Time when Makerspace Instructors are present.
- Get support, ask questions, and do intros.

WHEN

All Makerspace
(Woodworking excluded)

Mon - Fri
16.30 - 19.30



SUPPORT HOURS - Woodworking

WHAT

- Time when the Makerspace Carpenter is present: the woodworking can be accessed.
- Get support, ask questions, and do intros.
- Access is paused during introductions.

WHEN

Woodworking
(Miter saw, bandsaw, belt sander, drill press, planer)

Mon - Fri
CALENDAR on SPH website

HOW DO I GET INTROS AND HELP?

DAYTIME STAFF PRESENCE

WHAT

- Staff are often around for their own work.
- They may help occasionally, but no guaranteed support.

WHEN

All Makerspace, location varies

(Woodworking excluded)

Mon - Fri

9 - 17

(Office hours)

OTHER

MAKERSPACE SHOP

WHAT

- On site shop for materials.
- Online catalogue, no ordering.

WHEN

Receptionist

(Approach at the reception)

Mon - Fri
8 - 19.45

Instructors

(Approach in the Makerspace)

Mon - Fri
16.30 - 19.30

CHRISTMAS CLOSING 2025

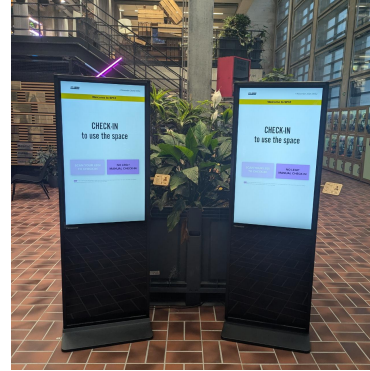
The SPH building will be closed from **Friday, 19 December 2025 at 18:00** until **Monday, 5 January 2026 at 10:00**.

3D printers will be put offline on **Friday, 19 December at 16:00**.

GENERAL RULES

Open to **ETH Students** and
SPH supported
projects members.

ALWAYS
CHECK IN when
entering.



Coworking
areas are **ONLY**
for project
members.



For making,
NOT studying.

ONLY for
personal and
extracurricular
projects.

Prototyping
ONLY.
No commercial
manufacturing.

MAKERSPACE RULES

CLEAN your workspace & put tools back.



Keep tools
INSIDE the Makerspace.

NO food and beverages.



ONLY Makerspace power tools allowed.

Create responsibly:
NO weapons or replicas.



SAFETY



Inside the DIGITAL FABRICATION ROOMS

safety glasses are mandatory

(you can find safety glasses near the
entrances)



SAFETY



If you see something
broken or not working
correctly, please report it to a
instructor or staff.



SUSTAINABILITY IN THE MAKERSPACE (ZENTRUM LOCATION)

REUSABLE ELECTRONICS CORNER

Donate or take still usable electronics (near screw rack in the Makerspace).



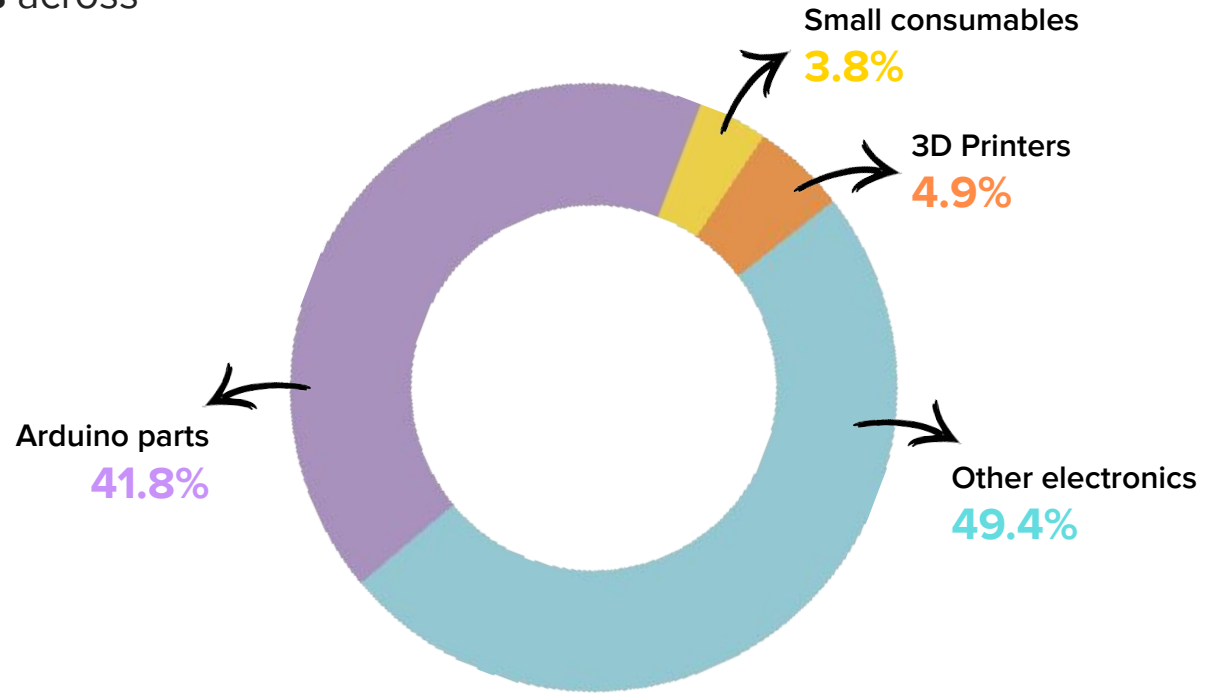
TEXTILE DONATION BOX

Donate old garments, to use as scrap/test fabric (near Welcome Desk).



SUSTAINABILITY IN THE MAKERSPACE

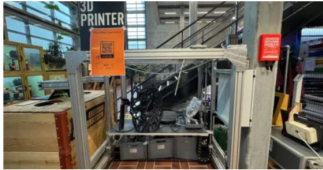
Distribution of **emissions** across different items from the Makerspace Shop.



STAY UPDATED!

Check our website (Makerspace > updates) for **news and updates** about the Makerspace.

MAKERSPACE UPDATES



Big 3D Printer: Resurrection!

Apr 17, 2025

[Find out more >](#)



Makerspace Safety Update

Apr 17, 2025

[Find out more >](#)



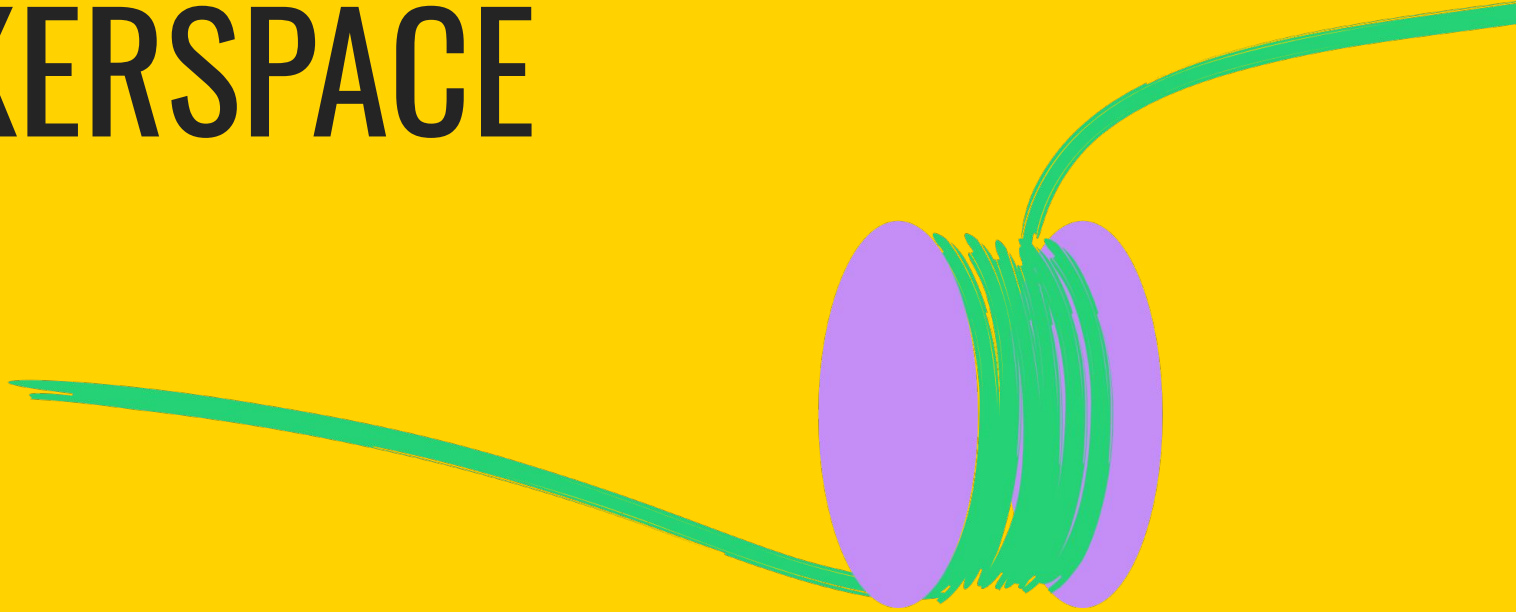
New Sustainable Acrylic sheets

Apr 28, 2025

[Find out more >](#)



SHORT TOUR OF THE MAKERSPACE



STUDIO TABLES AND MISSING TOOLS

STUDIO TABLES:

- 6 Studio Tables in Zentrum, 2 in Höngg
- Each studio table has been assigned with a specific color

TOOLS:

- All tools are labelled with name
- All tools are labelled with color



STUDIO TABLES AND MISSING TOOLS

TO CHECK WHEN OPENING A TABLE:

1. Do tools match the color of the table?
 - YES >> amazing!
 - **NO >> Please move them to the correct table (matching by color!).**

1. Are all the tools there?
 - YES >> amazing!
 - **NO >> Please report the missing item, by scanning the qr code (one for each drawer!).**

