

CUTTING PLOTTER FENTA SL1300



You can make:

Sticking signs with Vinyl Foil



Customized Clothes with Textile Foil



- Cuts Vinyl and Textile Foils
- Maximum Cutting Width: 132cm
- Maximum Cutting Length: unlimited

Prepare the Machine

Step 1

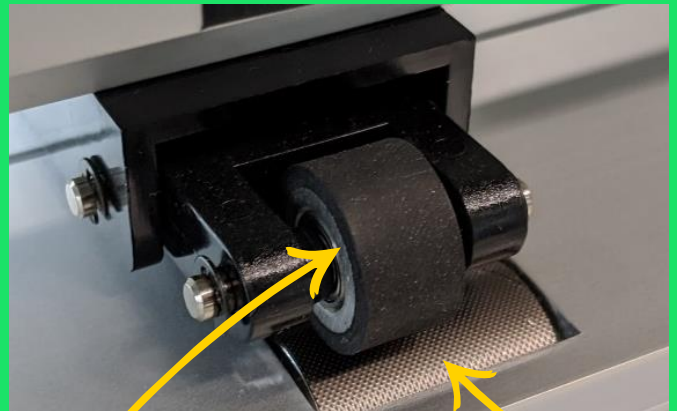
- Turn on the machine using the ACOS-system
- Implement your design in CorelDraw
 - Draw it in CorelDraw or find a suitable picture and vectorize it

Step 2

- Choose your material and purchase it in our store
- Add an extra length of at least 5 centimeters to your design so the plotter can keep hold of the foil

Step 3

- Adjust the position of the rollers
 - Each roller needs to be on top of one the bottom rolls
 - They need to cover the whole width of the material
 - They need to be evenly distributed

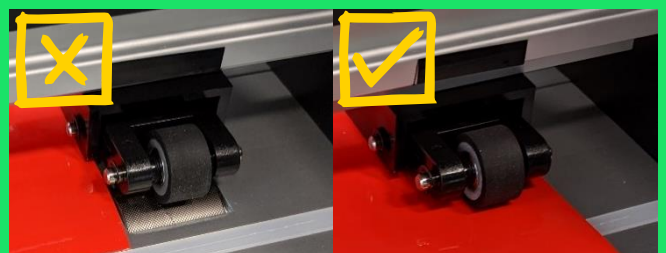


Roller

Bottom roll

Step 4

- Load the material
 - The material needs to be square in the machine
 - Engage every roller above the material. All other rollers must be disengaged.
 - When cutting **Textile Foil** use the **Cutting Mat**





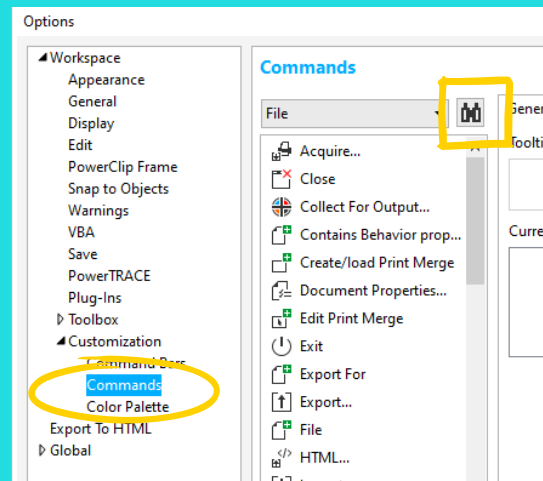
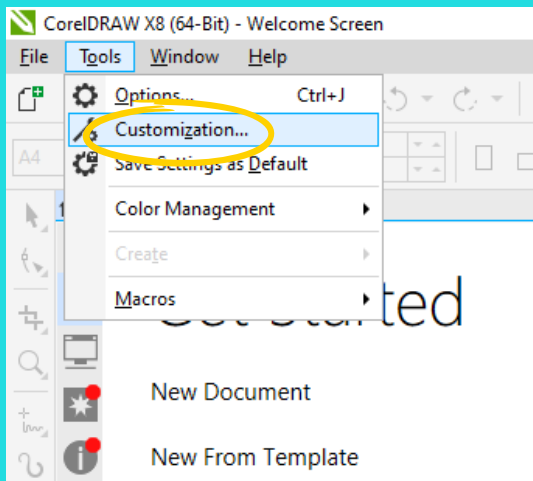
Overview

- Same Software as for the Laser Cutters
- Very powerful but also complex
- Available on all Makerspace computers

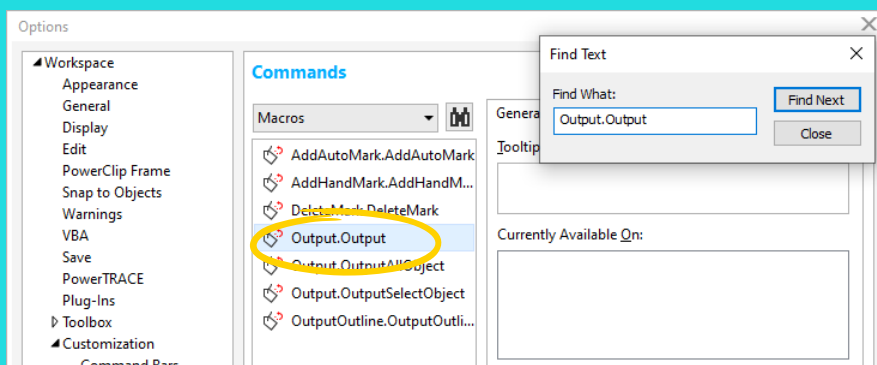
Enable the plotter plugin

- When using the cutting plotter for the **first time** with your ETH-account the plotter plugin needs to be implemented to access the Cutting Plotter from the computer

- Open CorelDraw
- Click on “Tools” → “Customization”
- Click on “Commands” and then on the Search button

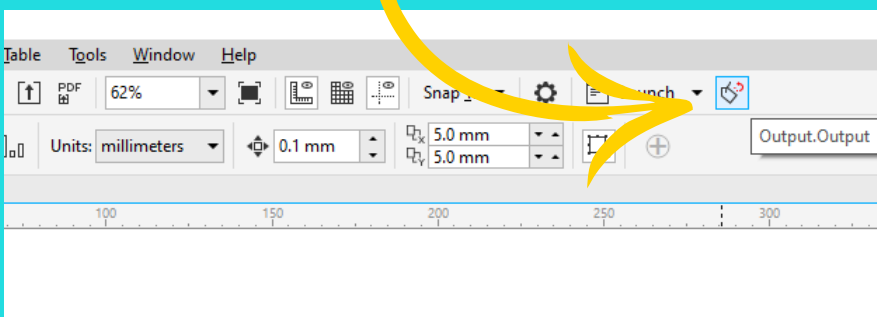
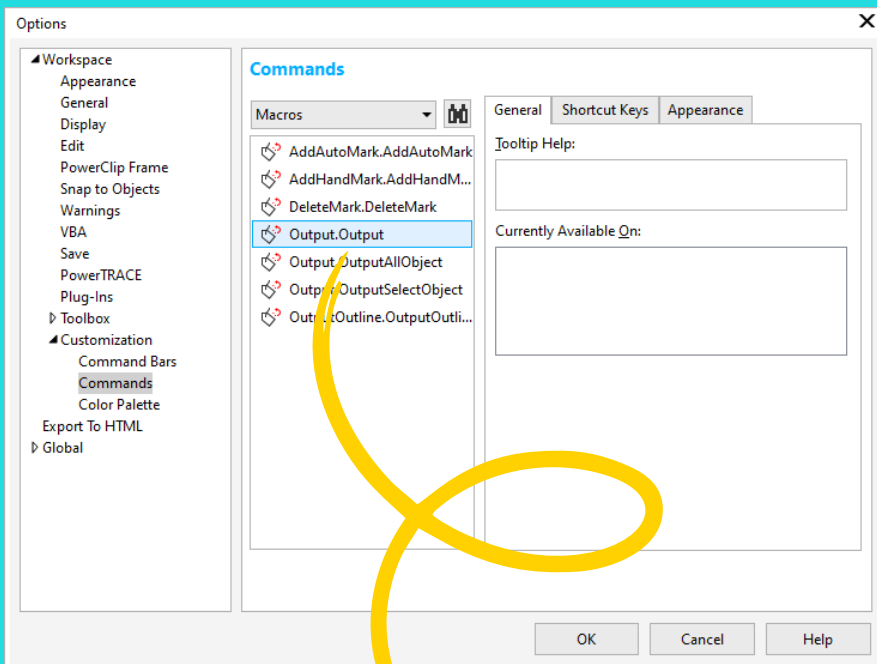


- Search for “Output.Outout” and click “Find Next”

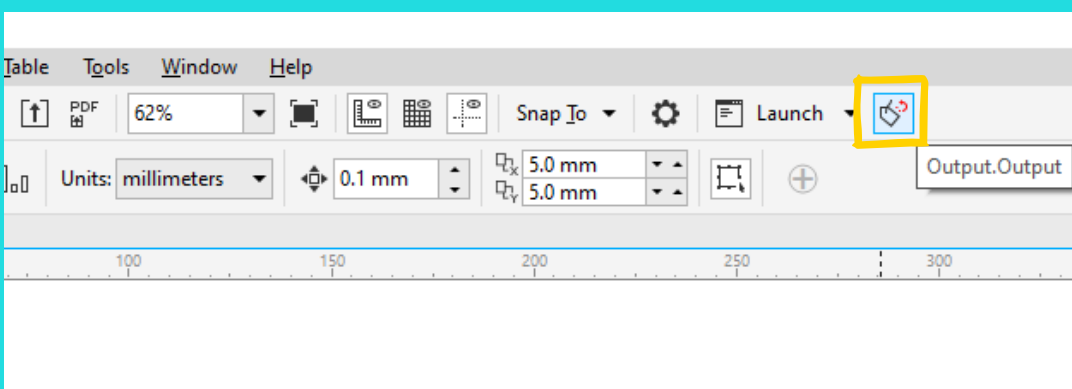




- Select “Output.Output” and Drag’n’Drop it into the toolbar



- Close the Options-Window
- From now on you can use the new icon to send the document to the plotter

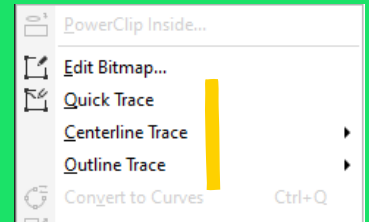




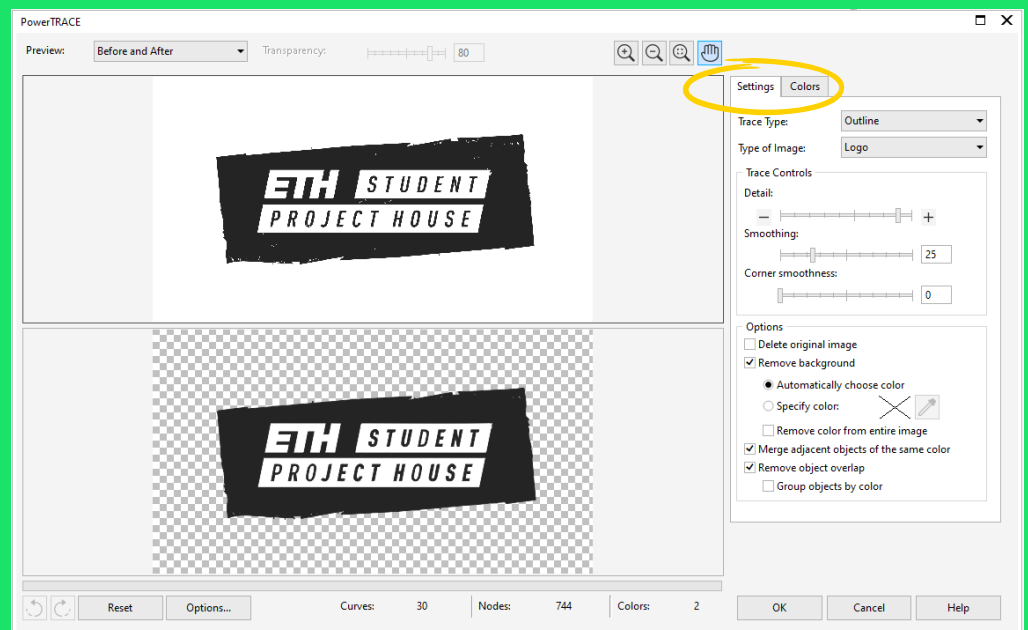
Vectorizing Images

The Cutting Plotter can only cut vectorized images

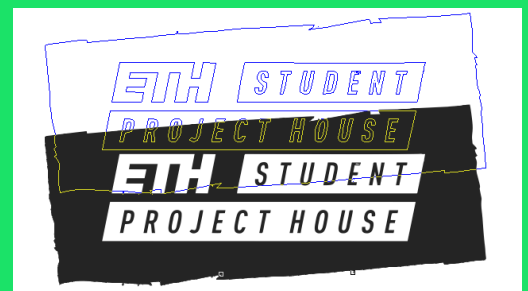
- Import your picture into CorelDraw
- Select it and click the right mouse button
- Select in the popup-menu Quick Trace



- If this doesn't work select in the popup menu Outline Trace to open the PowerTRACE menu
- You can play around with the settings to get the best projection depending on your image
- Press OK



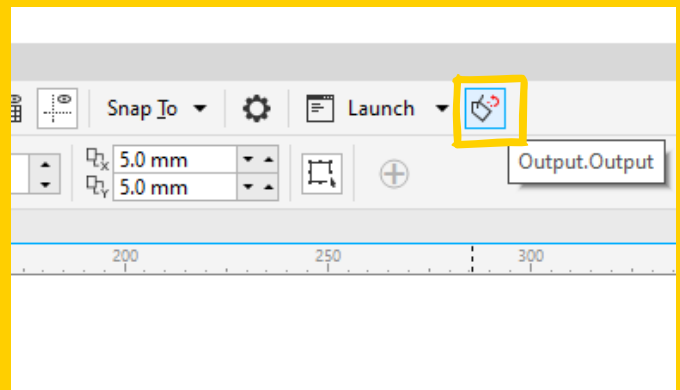
- To check if your design is vectorized drag it with your mouse to see the lines of your design



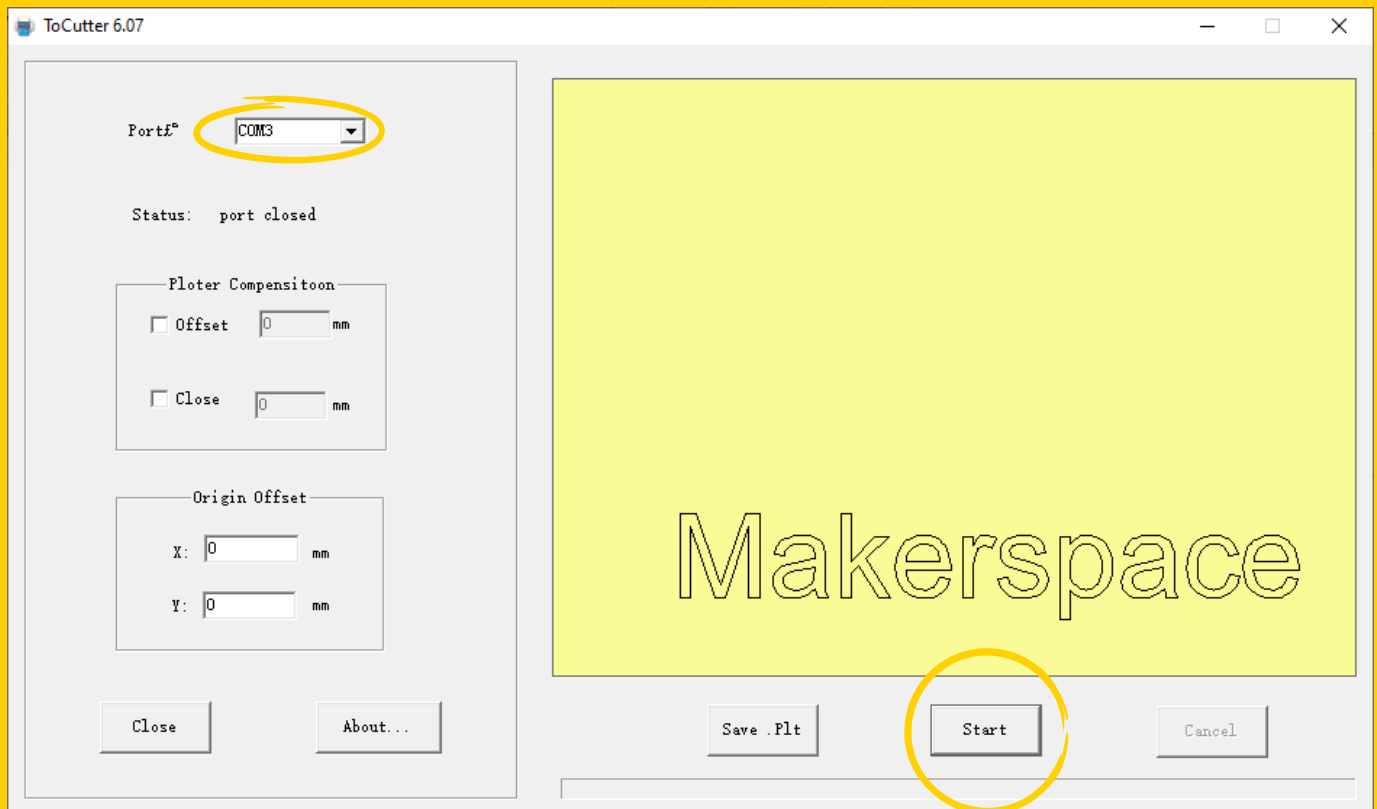


Start a plotting job

- Design the file you want to plot
- When cutting on **Textile Foil mirror** your design bevor cutting
- Click on the Output.Output icon
- Confirm with “OK”



- Select the Port “COM3”



- The cutter will start in the **bottom right corner** of the design, so make sure the plotter is positioned in the bottom right corner of the material
- Press “Start”

Using Transfer Foil

When cutting **Vinyl Foil** and your design consists out of **multiple, non connected parts**, you might want to use Transfer Foil to place the parts in an accurate position.

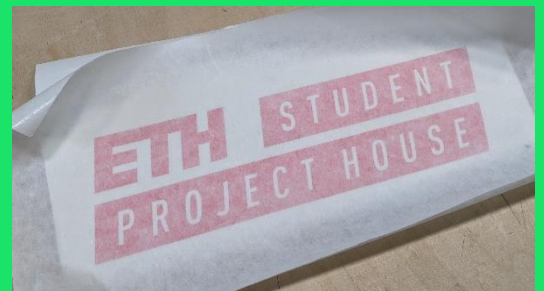
Step 1

- Cut out the part as usual on the plotter
- Remove all the foil parts that are not part of the final design (a knife and tweezers can help)



Step 2

- Take a piece of Transfer Foil and put it with its sticky side on the front of your design
- Press the Transfer Foil firmly onto your design



Step 3

- Remove the carrier film from the backside of your design
- Make sure that all parts stick to the Transfer Foil



Step 4

- Place the object in its final position



Step 5

- Remove the Transfer Foil

